

PRIME DAILY

December 12, 2025



Dow Hits Record Highs While AI Doubts and Surging Jobless Claims Drag Technology Lower. Nifty eyes a close above 26000, focus to shift to mid and small stocks.

Markets diverged as the S&P 500 and Dow hit record closes following a less hawkish-than-expected Federal Reserve policy update, while the Nasdaq declined amid Oracle's disappointing results.

The Dow and Russell 2000 reached new highs, but surging jobless claims raised labour market concerns, pulling down the dollar and Treasury yields.

The Dow's surge was partly driven by Visa, which rose 6.1% on a broker upgrade, along with substantial gains in Nike, UnitedHealth, and American Express.

Oracle plunged 13%, triggering a tech selloff after massive spending and weak forecasts raised doubts about AI investment returns. The company's fiscal Q2 earnings beat estimates but revenues disappointed, highlighting uneven gains from AI technology despite widespread belief in its transformative potential.

NVIDIA and other AI stocks also declined, suggesting renewed valuation concerns.

Broadcom projected first-quarter revenue above estimates on Thursday but warned margins would compress due to a higher AI revenue mix, sending shares down 5% after hours.

Initial jobless claims jumped to 236,000 for the week ending December 6—up 44,000 from the prior week's revised 192,000, exceeding expectations.

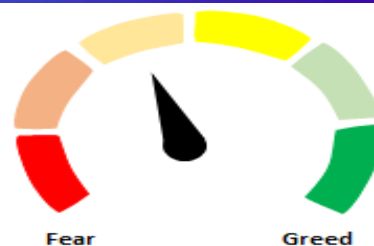
Gold rose on Thursday to hit its highest level in more than a month after the U.S. Federal Reserve's quarter-point rate cut pushed the dollar lower, while silver surged to a record high.

Nifty snapped its three-session losing streak yesterday, gained 140 points to close at 25,898.

Over the past three sessions, Nifty has consistently tested the 50-DEMA at 24,735, establishing a short-term base near this level that should provide strong support as we advance. On the upside, 26202 remains a positional hurdle for the bulls.

Nifty eyes a decisive close above 26,000, shifting market attention toward mid and small-cap stocks for near-term opportunities.

Indian markets are poised to open higher in line with positive global cues.



Global Equity Indices

	Close	Abs. Change	% Change
Indian Indices			
Sensex	84,818	426.9 ▲	0.51%
Nifty	25,899	140.6 ▲	0.55%
Midcap	59,578	570.3 ▲	0.97%
Small cap	17,228	137.9 ▲	0.81%
US Indices			
Dow Jones	48,704	646.3 ▲	1.34%
S&P 500	6,901	14.3 ▲	0.21%
Nasdaq	23,594	-60.3 ▼	-0.25%
European Indices			
FTSE	9,703	47.6 ▲	0.49%
DAX	24,295	164.5 ▲	0.68%
CAC	8,086	63.1 ▲	0.79%
Asian Indices			
Shanghai	3,873	-27.2 ▼	-0.70%
Hang Seng	25,531	-10.3 ▼	-0.04%
Nikkei	50,730	127.2 ▲	0.25%

Indices Futures

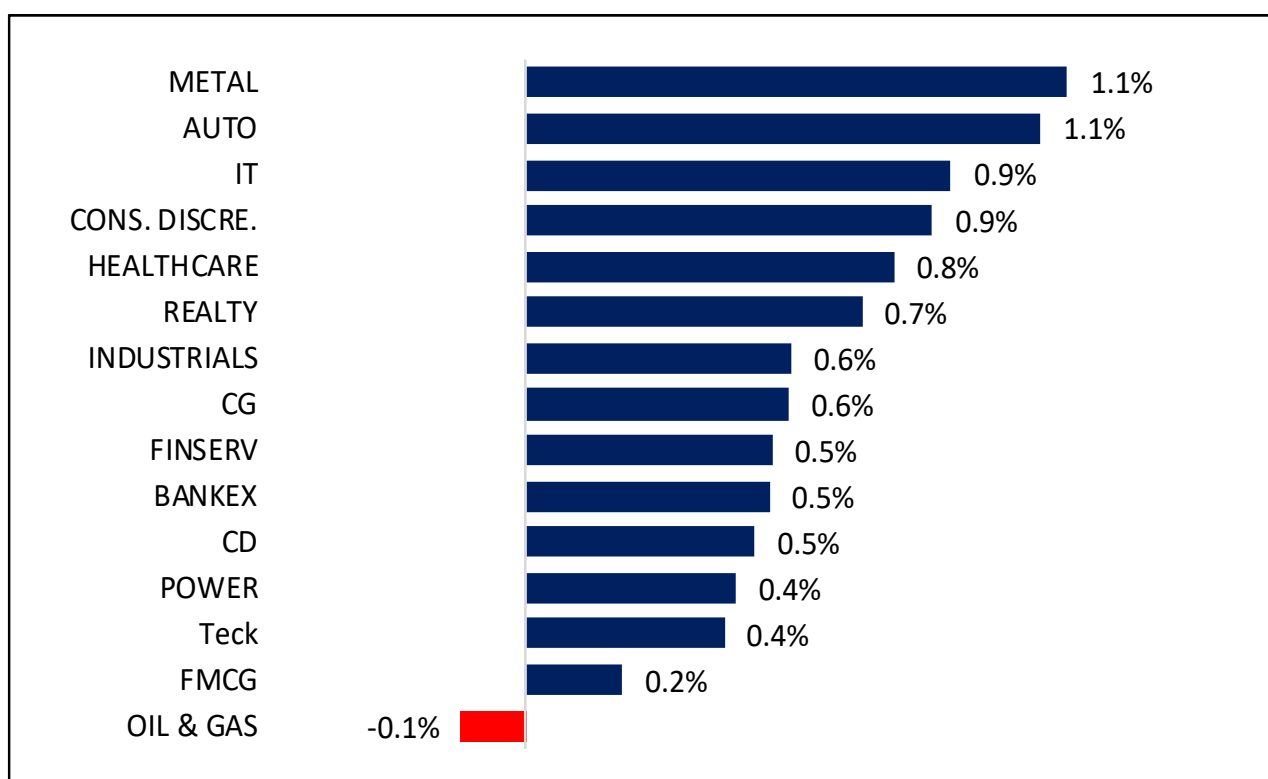
	Close	Abs. Change	% Change
IFSC Nifty			
IFSC Nifty	26,123	97.0 ▲	0.37%
US Indices			
Dow Jones	48,849	103.0 ▲	0.21%
S&P 500	6,909	1.8 ▲	0.03%
Nasdaq	25,688	-25.3 ▼	-0.10%
European Indices			
FTSE	9,742	-1.0 ▼	-0.01%
DAX	24,394	105.0 ▲	0.43%
Asian Indices			
Shanghai	4,563	19.0 ▲	0.42%
Hang Seng	25,901	95.5 ▲	0.37%
Nikkei	50,663	-267.5 ▼	-0.53%

Nifty50 Index Contributors

Top Five (Positive Contributors)		
Stock	Points	% Change
HDFCBANK	35.0	0.14
KOTAKBANK	14.8	0.06
RELIANCE	12.5	0.05
INFY	11.1	0.04
ETERNAL	9.0	0.03

Bottom Five (Negative Contributors)		
Stock	Points	% Change
BHARTIARTL	-8.8	-0.03
ICICIBANK	-6.7	-0.03
AXISBANK	-3.6	-0.01
BAJFINANCE	-2.5	-0.01
ASIANPAINT	-2.4	-0.01

BSE Sectoral Leaders & Laggards

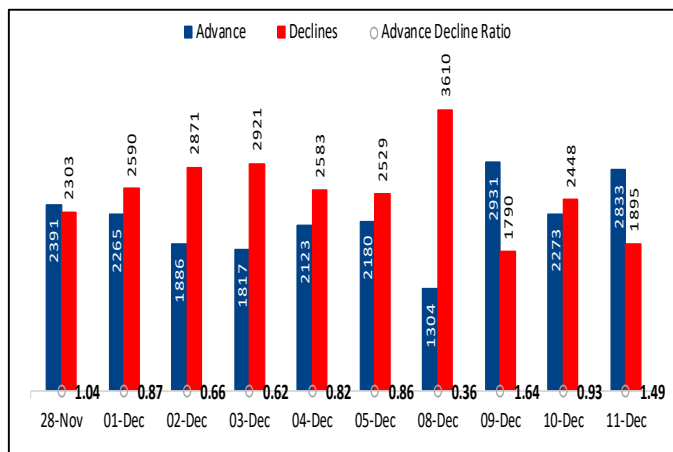


Nifty50 Index Top Pops & Drops

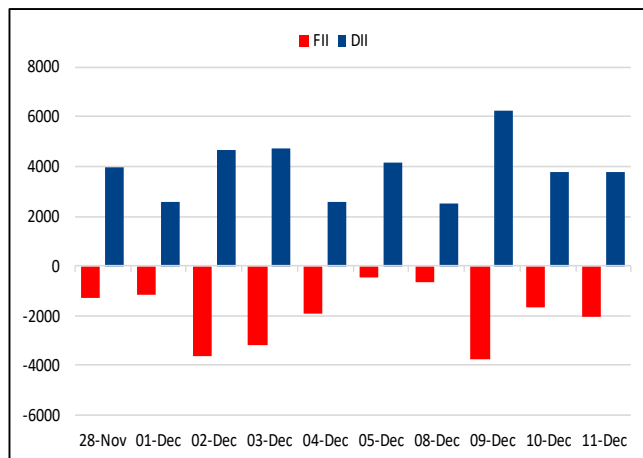
Nifty50 Top Five Gainers			
Symbol	LTP	% Change	Volume
ADANIENT	2277.7	2.99	1,519,832
ETERNAL	290.95	2.72	21,043,741
JIOFIN	298.45	2.61	9,589,482
TATASTEEL	166.38	2.56	32,603,566
KOTAKBANK	2180.2	2.38	4,995,720

Nifty50 Top Five Losers			
Symbol	LTP	% Change	Volume
ASIANPAINT	2779.4	-0.89	777,422
BHARTIARTL	2053.2	-0.67	3,254,850
AXISBANK	1272.7	-0.46	2,017,404
BAJFINANCE	1006.4	-0.39	4,670,539
SBILIFE	2006.9	-0.38	635,250

BSE Advance & Declines



Institutional Activities



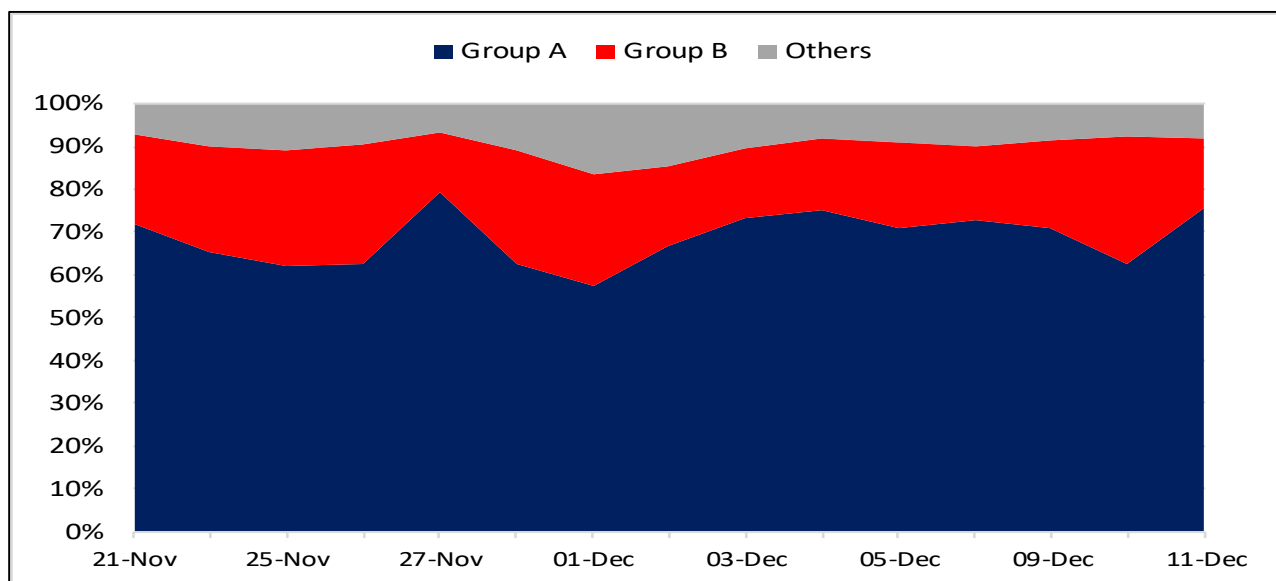
52 Week High Stocks

	11-Dec-25	10-Dec-25
BSE Universe	124	118
BSE Group A Stocks Hitting 52 Week High		
Stocks	Price	52 Week High
EICHERMOT	7255.25	7324
CUMMINSIND	4531.95	4588.1
MOTHERSON	119.8	120.2
IDEA	11.25	11.3
ESABINDIA	6362.25	6417.55




52 Week Low Stocks

	11-Dec-25	10-Dec-25
BSE Universe	179	148
BSE Group A Stocks Hitting 52 Week Low		
Stocks	Price	52 Week Low
BLUEDART	5394.4	5355
CROMPTON	251.55	248.4
DIXON	12995	12133.5
NCC	161	158.95
PAGEIND	37036.4	36557.5

BSE Cash Market Turnover Participant-wise



News Highly Sensitive to Stock Price

Impact	Stock	News
	Tata Power	Jejuri Hinjewadi Power Transmission Limited (Project SPV), will be developed on a Build-Own-Operate Transfer basis to provide transmission services for 35 years from the Scheduled Commercial Operation Date (SCOD), set 24 months after the SPV transfer. The project includes construction of approximately 115 km of 400 kV double-circuit (D/c) line between Jejuri and Hinjewadi and extension of 400 kV GIS line bays at substations in both locations.
	Piramal Pharma	The US FDA conducted a general Good Manufacturing Practices (GMP) inspection of Piramal Pharma's Lexington (Kentucky, USA) facility from December 3–10. At the conclusion of the inspection, the US FDA issued a Form 483 with four observations. These observations relate to enhancements in procedures and will be classified as VAI (Voluntary Action Indicated).
	Oswal Pumps	Company received Letter of Empanelment/Letter of Award from Maharashtra State Electricity Distribution Company Limited for 13,738 Off-Grid DC Solar Photovoltaic Water Pumping Systems (SPWPS) which is to be executed within One year under the PM Kusum B Scheme "Magel Tyala Saur Krishi Pump" Yojna. The total value of 13,738 SPWPS is Rs 380 crore approx. (including GST).

Stock	News
Astra Microwave	Astra Microwave Products Ltd has received an order for procurement of Six Nos. of Klystron-based S-band Polarimetric Doppler Weather Radars (DWRs) along with associated systems including AWS and Disdrometers with 3 years warranty followed by 7 years CAMC for a total consideration of Rs 171.38 crores (inclusive of all applicable taxes and GST.) It would be executed within the next 18 months.
Gem Aromatics	<p>GEM Aromatics announced the commencement of commercial production of WS-23 & WS-03 Cooling Agents, along with Clove Oil and Eugenol, at its newly established greenfield manufacturing facility in Dahej, Gujarat, under Krystal Ingredients Private Limited, a wholly owned subsidiary of the company. This facility integrates advanced process technology and rigorous quality systems, enabling us to deliver superior-grade, high-purity products tailored to the exacting requirements of domestic and international customers. The expansion will strengthen its presence in niche, value-added segments, including cooling agents and spice-derived aroma ingredients.</p> <p>This installed manufacturing capabilities can be deployed across varied models like CRO, CMO and CDMO. Company has invested around Rs 250 crore in the said facility.</p>
Centum Electronics	Centum Electronics Limited, announced a transformative teaming agreement with Indra Air Traffic Inc, a global leader in defence, air traffic, and space innovation. This strategic alliance marks a pivotal moment in India's journey toward technological self-reliance and defence modernization. Under this agreement, Centum and Indra will collaborate to manufacture air navigation systems in India, tailored for the Indian Navy.
Cyient Ltd	Cyient Limited, a global Intelligent Engineering solutions company, announced the strengthening of its Middle East presence with dedicated operations, extending its global footprint to better serve customers across the region's critical Energy, Utilities, Transportation, and Connectivity sectors.
BEML	BEML has unveiled a prototype of its new driverless metro trainset in Bengaluru. This advanced train will serve the upcoming Pink and Blue lines of the Bangalore Metro. The Rs 3,177 crore contract includes supplying 318 metro cars designed and manufactured locally. BEML will also provide maintenance support for 15 years.

Stock	News
Shakti Pumps	Shakti Pumps (India) has received a Letter of Empanelment from Maharashtra State Electricity Distribution Company for 16,025 Off-Grid DC Solar Photovoltaic Water Pumping Systems (SPWPS) pumps of 3 HP, 5 HP, 7.5 HP for the entire state of Maharashtra under Magel Tyala Saur Krushi Pump Yojana /PM Kusum B Scheme. The total value of the 16025 pumps is around Rs. 443.78 crore (inclusive of GST) which is to be executed within 60 days from the issuance of work order/NTP.
KPIL/HG Infra	H.G. Infra Engineering announced that the joint venture of H.G. Infra Engineering (40% share) and Kalpataru Projects International (lead member with 60% share) has received Letter of Acceptance (LOA) from Maharashtra Metro Rail Corporation on 10 December 2025, for design and construction of Elevated Metro Viaduct of length 20.527 kms between UG Ramp and Balkum Naka including Depot Approach Viaduct and three Special Spans for Thane Integral Ring Metro Project.
Sahaj Solar	Sahaj Solar Limited has received Letter of Empanelment (LoE) and Rate Contract and Allocation of quantity from Maharashtra State Electricity Distribution Co. Ltd. (MSEDCL) for Design, Manufacture, Supply, transport, installation, testing and Commissioning of Off-Grid DC Solar Photovoltaic water pumping systems (SPWPS) of 3 HP, 5 HP & 7.5 HP capacities at identified farmer's site in district of Maharashtra, including complete system warranty and its repair and maintenance and Remote Monitoring System (RMS) for 5 Years under "Magel Tyala Saur Krushi Pump" Yojana / PM KUSUM B Scheme.
Rama Steel Tubes	The company announced its plan to acquire Automech Group, a UAE-based high-precision manufacturing services, machines, and components provider, for AED 296 million (Rs 728 crore). This strategic transaction will help the company diversify into high-value engineering services and strengthen its presence across the GCC and MENA regions.
Firstsource Solutions	The company's subsidiary has completed the acquisition of Pastdue Credit Solutions (PDC), an FCA-registered UK-based collections agency engaged in providing white-label early arrears, debt collection, and recovery services, for GBP 22 million.
Kirloskar Ferrous Industries	Operations at the Hiriyur plant in Karnataka continue to remain suspended due to additional time required for maintenance and repair activities.

Stock	News
Kansai Nerolac	The Board has granted approval for the sale of the company's entire 60% stake in Kansai Paints Lanka, its subsidiary in Sri Lanka, to Atire, a Sri Lankan entity. The company will be executing an agreement for the sale of its stake.
NBCC (India)	The company has received a project management consultancy order worth Rs 255.50 crore from NALCO, and another worth Rs 33.89 crore from SAIL Bokaro.
Vedanta	The company has been declared the successful bidder for the Genjana nickel, chromium, and PGE block. This successful bid under the Critical Mineral Auctions — Tranche III, will further strengthen the company's critical minerals portfolio.
Honasa Consumer	The company has announced the acquisition of BTM Ventures, the parent company of Reginald Men, founded in August 2022 by Trisha Reddy Talasani. Reginald Men, a premium personal-care brand for men, offers sunscreen and serum, which are focus categories for Honasa. As part of the transaction, Honasa will acquire a 95% stake at an enterprise value of Rs 195 crore. The remaining 5% will be acquired after 12 months based on pre-agreed valuation criteria.
Adani Power	Adani Power is looking to set up thermal and hydro power projects in South Asian countries following its recent foray into nuclear and international hydropower ventures. The company recently signed a memorandum of understanding for a 500 MW hydropower capacity addition in Bhutan, under a 50:50 joint venture with Druk Green Power (DGPC) of the Bhutan government

Key Events

U.S. Jobless Claims Rebound More Than Expected To 236,000

First-time claims for U.S. unemployment benefits rebounded by more than expected in the week ended December 6th, according to a report released by the Labor Department on Thursday. The report said initial jobless claims rose to 236,000, an increase of 44,000 from the previous week's revised level of 192,000. Economists had expected jobless claims to climb to 220,000 from the 191,000 originally reported for the previous week.

U.S. Trade Deficit Unexpectedly Narrows In September As Exports Surge

Reflecting a sharp increase in the value of exports, the Commerce Department released a report on Thursday showing the U.S. trade deficit unexpectedly narrowed in the month of September. The Commerce Department said the trade deficit shrank to \$52.8 billion in September from a revised \$59.3 billion in August. Economists had expected the trade deficit to widen to \$63.3 billion from the \$59.6 billion originally reported for the previous month.

World Bank Forecasts China GDP To Grow 4.9% In 2025

China's economy is forecast to expand more than previously estimated this year and the growth will depend more on domestic demand in the coming years, the World Bank said in its latest China Economic Update, released Thursday. The bank projected economic growth at 4.9 percent this year and 4.4 percent in 2026, as existing headwinds are expected to persist. The lender expects fiscal measures together with some stability in global trade policy to support investment and exports.

Japan Business Sentiment Improves In Q4

Confidence among Japanese manufacturing companies improved in the fourth quarter, survey results from the Ministry of Finance showed on Wednesday. The business survey index for manufacturers rose to 4.7 in the fourth quarter from 3.8 in the third quarter. However, the index is forecast to fall to 1.1 in the first quarter of 2026. At the same time, the BSI for non-manufacturing companies dropped marginally to 5.1 in the December quarter from 5.2 in the preceding quarter. For the first quarter, the index is seen falling to 5.0.

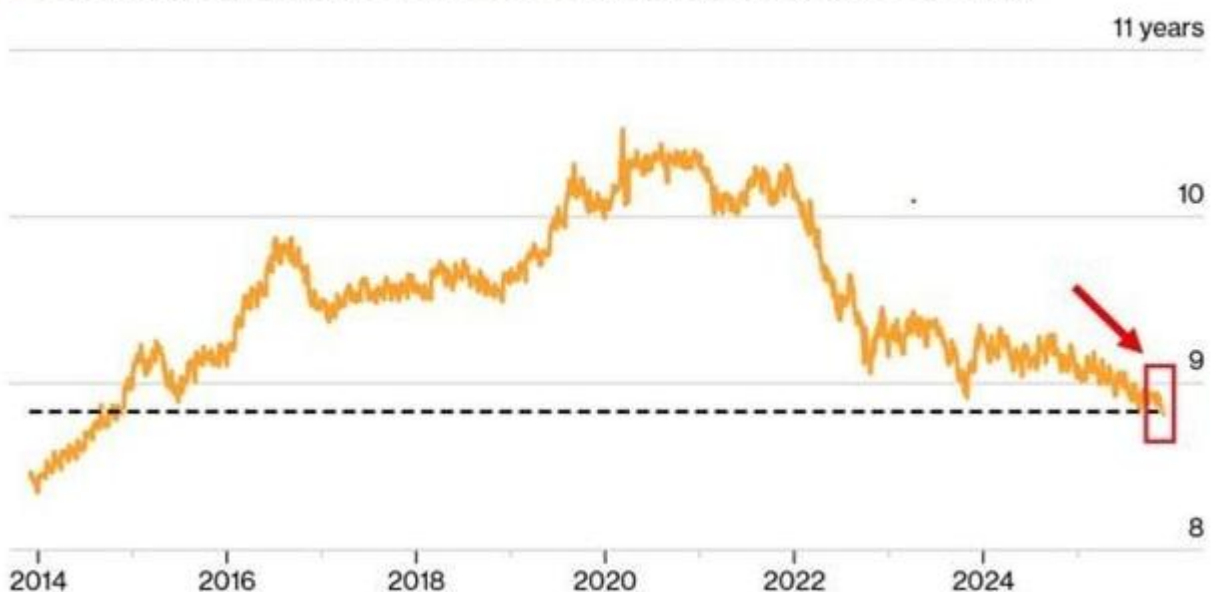
Chart with Interesting Observations

Government Borrowing is Trending Shorter

- The average maturity has dropped to its lowest point since 2014
- The current average time to maturity is approximately 8.5 years.
- This trend suggests that governments are issuing debt that needs to be repaid or refinanced more quickly.

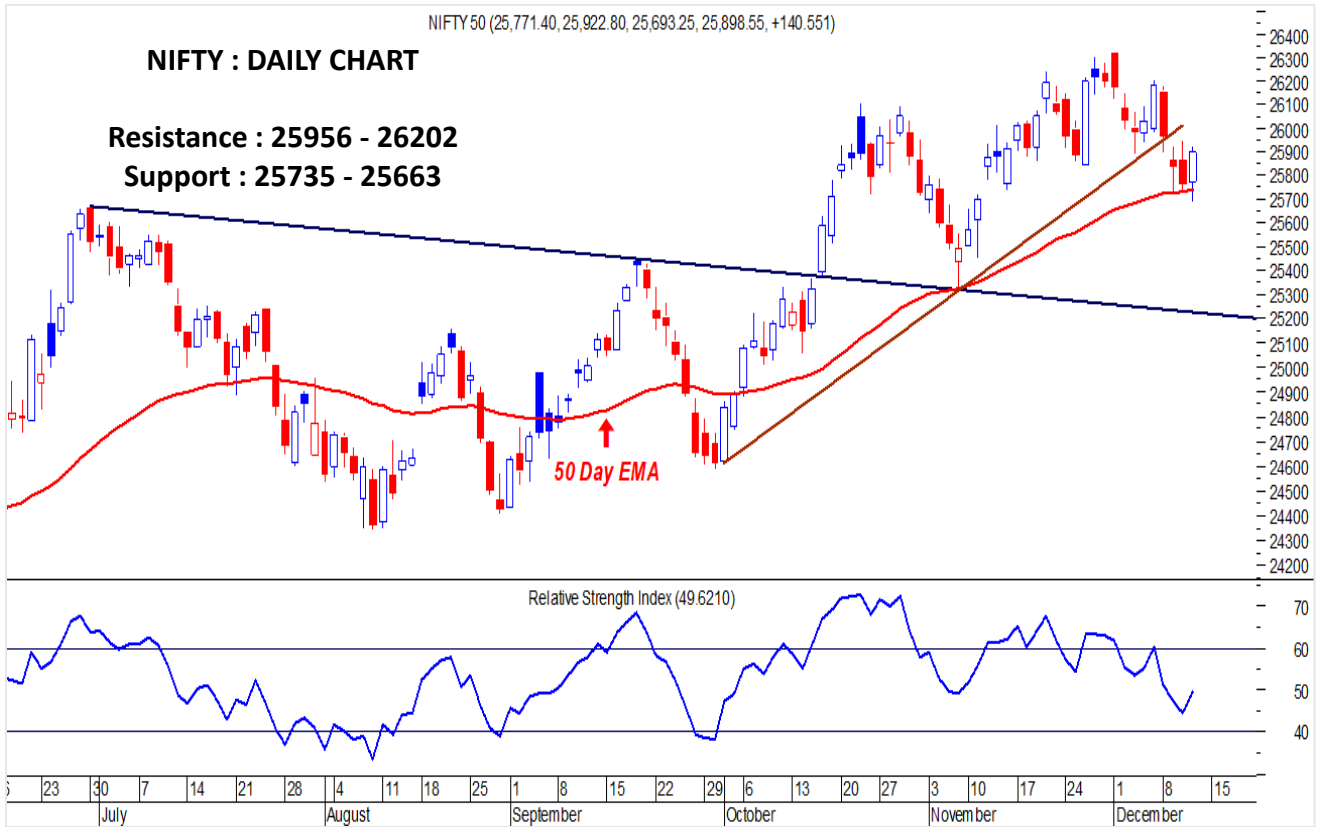
Bloomberg Global Agg Treasuries Total Return Index

— Bloomberg Global Agg Treasuries Total Return Index average time to maturity

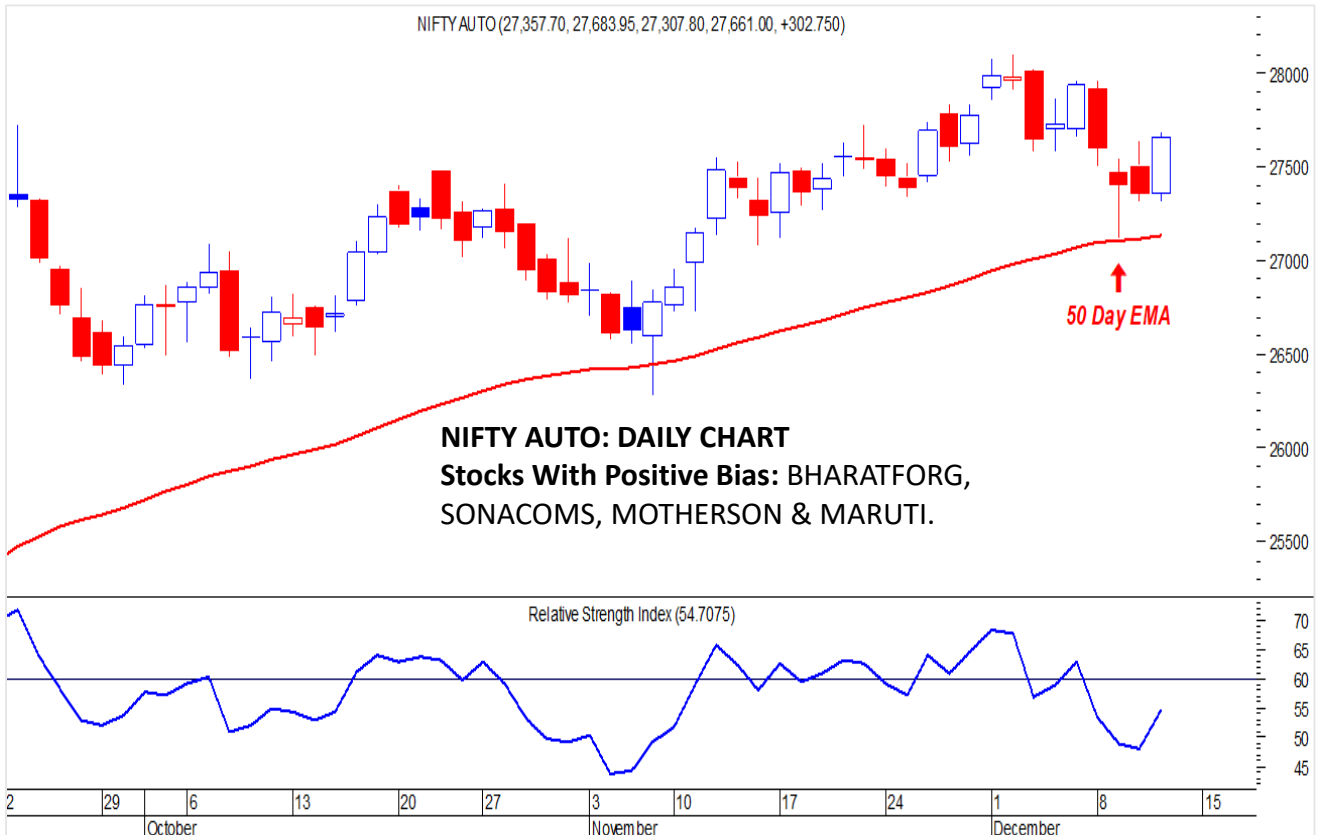


Source: Bloomberg

NIFTY : Price Holding Key Support, Potential Bounce in Play



NIFTY AUTO INDEX: Bullish Engulfing Pattern Signals Potential Reversal.



F&O Highlights

SHORT COVERING WAS SEEN IN THE NIFTY & BANK NIFTY FUTURES

Create longs with the SL of 25950 levels.

- Nifty snapped its three-session losing streak, gaining 140 points to close at 25,898. The index breached its 50-DEMA support within the first half hour of trade but staged a strong rebound, recovering nearly 229 points from the early morning low of 25,693 to finish firmly near day high.
- Short Covering was seen in the Nifty Futures where Open Interest fell by 2.53% with Nifty rising by 0.55%.
- Short Covering was seen in the Bank Nifty Futures where Open Interest fell by 4.97% with Bank Nifty rising by 0.42%.
- Nifty Open Interest Put Call ratio rose to 0.94 levels from 0.73 levels.
- Amongst the Nifty options (16-Dec Expiry), Call writing is seen at 26100-26200 levels, indicating Nifty is likely to find strong resistance in the vicinity of 26100-26200 levels. On the lower side, an immediate support is placed in the vicinity of 25800-25900 levels where we have seen Put writing.
- Long build-up was seen by FII's in the Index Futures segment where they net bought worth 291 cr with their Open Interest going up by 2027 contracts.

Index	Expected Trend	Prev. Close	Buy/Sell	Stop Loss	Target
NIFTY FUT	UP	26009.50	BUY AROUND 26050	25950	26200
BANK NIFTY FUT	UP	59496.20	BUY AROUND 59550	59350	60000

Nifty 50 Snapshot			
	11-Dec-25	10-Dec-25	% Chg.
Nifty Spot	25898.55	25758.00	0.55
Nifty Futures	26009.50	25863.90	0.56
Premium/ (Discount)	110.95	105.90	N.A.
Open Interest (OI)	1.81	1.86	-2.53
Nifty PCR	0.94	0.73	29.14

Bank Nifty Snapshot			
	11-Dec-25	10-Dec-25	% Chg.
Bank Nifty Spot	59209.85	58960.40	0.42
Bank Nifty Futures	59496.20	59246.40	0.42
Premium/ (Discount)	286.35	286.00	N.A.
Open Interest (OI)	0.20	0.21	-4.97
Bank Nifty PCR	0.87	0.82	6.62

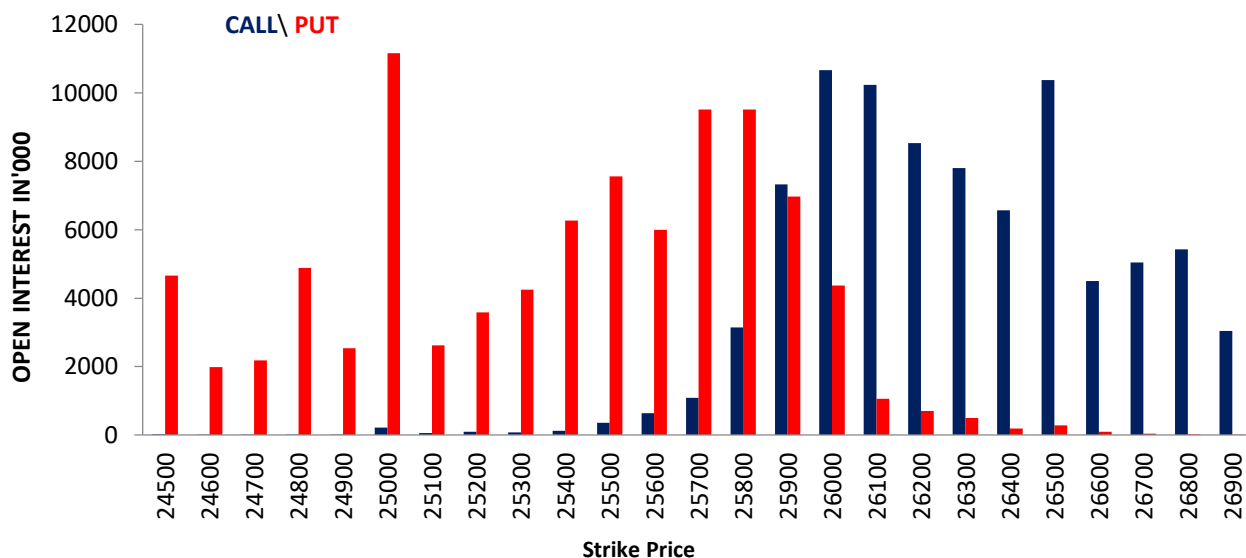
Nifty Options Highest OI (Weekly)			
CALL		PUT	
Strike Price	Open Interest (Contracts)	Strike Price	Open Interest (Contracts)
26000	142237	25000	148741

FII Activity on 11 Dec 2025

	BUY		SELL		NET	OPEN INTEREST	
	Contracts	Value (Rs Cr)	Contracts	Value (Rs Cr)	(Rs Cr)	Contracts	Value (Rs Cr)
Index Futures	15837	3109	14482	2818	291	190618	37001
Nifty Futures	9976	1922	11652	2247	-325	145246	27940
Bank Nifty Fut.	4910	1011	2373	486	524	27910	5721
Index Options	6220963	1210158	6270243	1220244	-10087	2156278	419200
Nifty Options	5982240	1161662	6031471	1171781	-10120	1804470	348455
Bank Nifty Opt.	185800	38389	186424	38484	-94	302527	61379
Stock Futures	273168	18632	230126	15876	2756	5881372	394851
Stock Options	365890	26170	364694	26090	80	464097	31299

FII's Open Interest (Contracts)

Date	Index Futures	Nifty Futures	Bank Nifty Futures	Index Options	Nifty Options	Bank Nifty Options	Stock Futures	Stock Options
11-Dec-25	190618	145246	27910	2156278	1804470	302527	5881372	464097
10-Dec-25	188591	143794	27329	2072396	1759567	265083	5880898	458931
NET (CONTRACTS)	2027	1452	581	83882	44903	37444	474	5166

Nifty Weekly (16 – Dec) Option Open Interest Distribution


Top Gainers OI Wise		
Company	Future OI (%)	Price (%)
ADANIGREEN	8.74	2.93
PPLPHARMA	6.67	0.47
HINDUNILVR	6.33	0.17
POLYCAB	6.14	1.11
MOTHERSON	5.62	3.03

Top Losers OI Wise		
Company	Future OI (%)	Price (%)
KFINTECH	-10.84	4.69
NUVAMA	-5.01	3.10
KEI	-4.30	2.77
OFSS	-3.97	1.72
HFCL	-3.94	1.21

Top Gainers Price Wise		
Company	Future OI (%)	Price (%)
DIXON	-2.78	5.16
IDEA	-0.52	4.94
KFINTECH	-10.84	4.69
BSE	-2.10	4.54
ANGELONE	-3.01	4.00

Top Losers Price Wise		
Company	Future OI (%)	Price (%)
AUBANK	-3.54	-2.08
SUPREMEIND	-1.26	-1.91
CHOLAFIN	3.15	-1.41
ABCAPITAL	-1.29	-1.25
ICICIPRULI	0.11	-1.09

Long Buildup		
Company	Future OI (%)	Price (%)
ADANIGREEN	8.74	2.93
PPLPHARMA	6.67	0.47
HINDUNILVR	6.33	0.17
POLYCAB	6.14	1.11
MOTHERSON	5.62	3.03

Short Buildup		
Company	Future OI (%)	Price (%)
LTF	5.00	-0.74
CHOLAFIN	3.15	-1.41
MUTHOOTFIN	3.05	-0.31
NHPC	3.03	-0.23
ZYDUSLIFE	2.55	-0.11

Long Unwinding		
Company	Future OI (%)	Price (%)
AUBANK	-3.54	-2.08
TITAN	-1.47	-0.02
ABCAPITAL	-1.29	-1.25
SUPREMEIND	-1.26	-1.91
HINDPETRO	-1.01	-0.32

Short Covering		
Company	Future OI (%)	Price (%)
KFINTECH	-10.84	4.69
NUVAMA	-5.01	3.10
KEI	-4.30	2.77
OFSS	-3.97	1.72
HFCL	-3.94	1.21

Securities In Ban For Trade – 12.12.2025

No.	Company Name
1.	BANDHANBNK
2.	SAMMAANCAP

Economic Calendar

Friday	Monday	Tuesday	Wednesday	Thursday
12 Dec	15 Dec	16 Dec	17 Dec	18 Dec
Japan: IIP UK: IIP, Trade Balance India, CPI	China: New Home sales, Retail Sales, IIP India: WPI, Trade Balance EU: IIP US: Empire Mfg. NAHB Housing Market Index	Japan, India, EU, UK, US: PMI (P) UK: Claimant Count EU: Trade Balance US: Nonfarm Payrolls, Unemployment Rate	Japan: Trade Balance UK: CPI EU: CPI US: MBA Mortgage Application	EU: Construction Output UK: BoE Monetary Policy EU: ECB Monetary Policy US: Initial & Conti. Claims, CPI, Core CPI

Open Derivatives Trading Calls

NO	RECO DT	RECO	COMPANY NAME	BUY RANGE	CMP	SL	TARGET	UPSIDE %	VALID TILL
1	11-DEC-25	BUY	BANK NIFTY DEC FUT	59597-59350	59,495.00	59250	60010	0.9	16-DEC-25
2	11-DEC-25	BUY	MIDCAP NIFTY 30TH DEC 13800 CALL OPTION	149.8	157.20	103	255	62.2	16-DEC-25
3	28-NOV-25	SELL	POWERGRID JAN FUT	274.65-278	266.1	282	250	6.1	30-DEC-25
4	4-DEC-25	BUY	CONCOR DEC FUT	514.5-503	508.75	495	541	6.3	18-DEC-25
5	9-DEC-25	SELL	NATIONAL ALUMINIUM DEC FUT	262.65-268	265.75	271	254	4.4	23-DEC-25
6	11-DEC-25	BUY	GODREJ CP DEC FUT	1130-1145.30	1,155.30	1120	1180	2.1	25-DEC-25
7	11-DEC-25	BUY	ANGEL DEC FUT	2548.5-2485	2,566.50	2450	2699	5.2	25-DEC-25

Open Short-Term MTF Calls

NO.	RECO DT.	RECO	COMPANY NAME	BUY RANGE	CMP	Lower Band	SL	TARGET	UPSIDE %	VALID TILL
1	7-NOV-25	BUY	M&M	3701-3720	3665.2	3626	3564	3904	6.5	16-DEC-25
2	9-DEC-25	BUY	POLICY BAZAR	1945-1940	1948.1	1892	1855	2056	5.5	30-DEC-25
3	10-DEC-25	BUY	EID PARRY	1045-1054	1029.6	1010	995	1110	7.8	24-DEC-25
4	11-DEC-25	BUY	ABB	5234-5250	5242.5	5125	5050	5500	4.9	1-JAN-26
5	11-DEC-25	BUY	SPANDANA	261.10-263	264.5	253.5	248.5	279	5.5	25-DEC-25

Open Positional MTF Calls

NO.	RECO DT.	RECO	COMPANY NAME	BUY RANGE	CMP	SL	TARGET 1	TARGET 2	UPSIDE %	VALID TILL
1	11-DEC-25	BUY	LUPIN	2072-2075	2081.8	1960.0	2198.0	2270	9	25-JAN-26

*= 1st Target Achieved

NSE 200 SUPPORT & RESISTANCE

SYMBOL	CLOSE	PIVOT	SUPT 2	SUPT 1	RESI 1	RESI 2	52 W H	52 W L	30 D % CHG
360ONE	1135.8	1126.9	1085.8	1110.8	1151.9	1168.0	1318.0	790.5	5.70
ABB	5242.5	5215.7	5105.2	5173.8	5284.3	5326.2	7960.0	4684.5	5.02
ABCAPITAL	354.5	356.7	347.7	351.1	360.1	365.7	369.0	149.0	6.27
ACC	1778.9	1779.9	1763.2	1771.1	1787.8	1796.6	2295.0	1770.4	-3.58
ADANIENSOL	999.6	994.5	968.5	984.1	1010.1	1020.5	1050.0	639.5	4.22
ADANIENT	2277.7	2254.7	2153.2	2215.4	2316.9	2356.2	2616.5	1967.5	-3.92
ADANIGREEN	1018.8	1006.7	955.3	987.1	1038.5	1058.1	1252.3	758.0	-2.16
ADANIPORTS	1504.0	1504.7	1484.7	1494.3	1514.3	1524.7	1549.0	1010.8	4.09
ADANIPOWER	140.6	140.6	137.8	139.2	142.0	143.5	182.7	89.0	-6.32
ALKEM	5626.0	5624.5	5531.0	5578.5	5672.0	5718.0	5868.0	4491.7	-0.94
AMBUJACEM	536.1	533.0	521.1	528.6	540.5	544.9	625.0	455.0	-3.60
APLAPOLLO	1723.0	1722.8	1698.7	1710.8	1734.9	1746.9	1936.0	1272.7	-4.23
APOLLOHOSP	7009.5	7016.0	6923.5	6966.5	7059.0	7108.5	8099.5	6001.0	-6.91
ASHOKLEY	160.3	159.5	155.5	157.9	162.0	163.6	164.5	95.9	12.69
ASIANPAINT	2779.4	2784.7	2736.3	2757.9	2806.3	2833.1	2985.7	2124.8	4.87
ASTRAL	1406.7	1402.4	1378.4	1392.5	1416.5	1426.4	1864.5	1232.3	-10.31
ATGL	587.1	586.6	576.9	582.0	591.7	596.3	798.0	532.6	-3.88
AUBANK	973.0	978.0	957.7	965.3	985.7	998.4	1007.3	478.4	6.39
AUROPHARMA	1172.2	1173.8	1151.5	1161.8	1184.1	1196.1	1356.2	1010.0	1.51
AXISBANK	1272.7	1275.2	1264.2	1268.5	1279.5	1286.2	1304.0	933.5	4.58
BAJAJ-AUTO	9053.5	9032.8	8909.8	8981.7	9104.7	9155.8	9490.0	7089.4	3.21
BAJAJFINSV	2065.8	2066.2	2033.5	2049.6	2082.3	2098.9	2195.0	1551.7	-2.48
BAJAJHFL	95.8	96.0	95.0	95.4	96.4	96.9	142.9	92.1	-11.49
BAJAJHLDNG	10984.0	11042.0	10836.0	10910.0	11116.0	11248.0	14763.0	10245.1	-12.92
BAJFINANCE	1006.4	1009.0	988.6	997.5	1017.9	1029.4	1102.5	679.2	-7.24
BANKBARODA	285.0	285.7	280.6	282.8	287.9	290.9	304.0	190.7	-0.94
BANKINDIA	140.8	140.4	137.4	139.1	142.1	143.5	151.4	90.1	-3.55
BDL	1413.4	1411.8	1381.7	1397.6	1427.7	1441.9	2096.6	907.0	-6.67
BEL	387.5	387.6	382.7	385.1	390.0	392.4	436.0	240.3	-7.04
BHARATFORG	1407.4	1398.9	1359.7	1383.5	1422.7	1438.1	1460.2	919.1	5.95
BHARTIARTL	2053.2	2053.5	2022.3	2037.7	2068.9	2084.7	2174.5	1559.5	1.65
BHARTIHEXA	1697.8	1693.1	1631.6	1664.7	1726.2	1754.6	2052.9	1234.0	-4.14
BHEL	276.5	276.5	271.1	273.8	279.2	281.8	295.3	176.0	1.15
BIOCON	381.8	380.3	373.9	377.8	384.2	386.6	425.0	291.0	-0.10
BLUESTARCO	1746.2	1742.5	1708.2	1727.2	1761.5	1776.8	2417.0	1521.0	-1.43
BOSCHLTD	36880.0	36688.3	35933.3	36406.7	37161.7	37443.3	41945.0	25921.6	-1.07
BPCL	351.3	352.3	345.0	348.2	355.4	359.5	381.6	234.0	-3.79
BRITANNIA	5847.0	5851.7	5769.7	5808.3	5890.3	5933.7	6336.0	4506.0	-4.67
BSE	2698.8	2663.5	2541.8	2620.3	2742.0	2785.2	3030.0	1227.3	2.80
CANBK	146.8	146.7	143.9	145.4	148.1	149.4	154.2	78.6	4.08
CGPOWER	666.5	665.7	658.1	662.3	669.9	673.2	797.6	517.7	-9.71
CHOLAFIN	1719.4	1727.2	1697.6	1708.5	1738.1	1756.8	1782.0	1168.0	-1.99
CIPLA	1512.3	1505.9	1484.5	1498.4	1519.8	1527.3	1673.0	1335.0	0.05
COALINDIA	384.0	383.3	378.4	381.2	386.1	388.1	419.7	349.3	0.69
COCHINSHIP	1597.0	1602.8	1576.0	1586.5	1613.3	1629.6	2545.0	1180.2	-9.01
COFORGE	1841.4	1843.1	1803.0	1822.2	1862.3	1883.2	2005.4	1194.0	4.77
COLPAL	2154.1	2150.9	2122.2	2138.2	2166.9	2179.6	2975.0	2096.2	-0.79
CONCOR	506.0	505.3	499.1	502.5	508.7	511.4	687.4	481.0	-2.95
COROMANDEL	2248.9	2256.7	2207.6	2228.2	2277.3	2305.8	2718.9	1596.0	3.82
CUMMINSIND	4531.9	4543.7	4466.4	4499.2	4576.5	4621.0	4588.3	2580.0	4.20

NSE 200 SUPPORT & RESISTANCE

SYMBOL	CLOSE	PIVOT	SUPT 2	SUPT 1	RESI 1	RESI 2	52 W H	52 W L	30 D % CHG
DABUR	501.8	500.6	493.9	497.8	504.5	507.3	577.0	433.3	-2.66
DIVISLAB	6430.0	6400.7	6176.7	6303.3	6527.3	6624.7	7071.5	4955.0	-3.91
DIXON	12988.0	12716.0	11816.0	12402.0	13302.0	13616.0	19148.9	12130.0	-12.64
DLF	693.7	689.8	674.3	684.0	699.5	705.4	896.6	601.2	-8.73
DMART	3830.8	3816.5	3737.7	3784.3	3863.1	3895.3	4949.5	3340.0	-4.68
DRREDDY	1273.5	1265.8	1237.9	1255.7	1283.6	1293.7	1405.9	1020.0	6.24
EICHERMOT	7256.0	7268.3	7160.3	7208.2	7316.2	7376.3	7328.5	4646.0	5.67
ENRIN	2905.4	2925.5	2846.5	2875.9	2954.9	3004.5	3625.0	2508.8	-11.48
ETERNAL	291.0	288.6	279.8	285.4	294.2	297.5	368.5	194.8	-3.48
EXIDEIND	374.6	372.7	365.8	370.2	377.1	379.7	472.5	328.0	-1.19
FEDERALBNK	260.9	260.7	257.0	259.0	262.6	264.3	263.2	172.7	9.41
FORTIS	855.9	855.8	842.2	849.0	862.6	869.3	1104.3	577.0	-13.79
GAIL	169.0	169.0	166.3	167.6	170.4	171.8	207.8	150.5	-6.92
GLENMARK	1956.0	1956.0	1932.7	1944.3	1967.6	1979.3	2284.8	1275.5	6.89
GMRAIRPORT	98.2	97.9	96.2	97.2	98.9	99.6	110.4	67.8	2.62
GODFRYPHLP	2802.5	2775.8	2660.8	2731.7	2846.7	2890.8	3947.0	1370.8	-6.54
GODREJCP	1147.9	1143.0	1116.0	1131.9	1158.9	1170.0	1309.0	979.5	1.88
GODREJPROP	2035.6	2027.5	1980.7	2008.1	2054.9	2074.3	3015.0	1900.0	-6.09
GRASIM	2797.8	2781.1	2721.1	2759.4	2819.4	2841.1	2977.8	2277.0	1.26
HAL	4320.8	4313.7	4265.3	4293.1	4341.5	4362.1	5165.0	3046.1	-9.79
HAVELLS	1402.4	1397.9	1377.1	1389.7	1410.5	1418.7	1782.7	1380.0	-3.79
HCLTECH	1672.4	1666.3	1637.9	1655.1	1683.5	1694.7	2012.2	1302.8	8.56
HDFCAMC	2664.7	2645.2	2575.0	2619.8	2690.0	2715.4	2967.3	1781.5	-51.52
HDFCBANK	1000.3	997.2	983.0	991.6	1005.8	1011.4	1020.5	812.2	1.60
HDFCLIFE	775.2	771.8	757.7	766.5	780.6	785.9	820.8	584.3	3.26
HEROMOTOCO	5979.5	5968.2	5854.2	5916.8	6030.8	6082.2	6388.5	3344.0	11.57
HINDALCO	824.4	825.5	815.7	820.0	829.8	835.2	864.0	546.5	4.99
HINDPETRO	448.1	447.8	439.4	443.7	452.2	456.3	494.5	287.6	-7.04
HINDUNILVR	2305.6	2303.5	2282.5	2294.1	2315.1	2324.5	2750.0	2136.0	-4.28
HINDZINC	522.7	523.5	507.4	515.0	531.1	539.6	546.8	378.2	7.85
HUDCO	212.5	212.2	208.0	210.3	214.5	216.4	262.7	158.9	-9.09
HYUNDAI	2342.3	2329.0	2278.0	2310.1	2361.1	2380.0	2890.0	1541.7	-0.59
ICICIBANK	1360.0	1359.8	1346.0	1353.0	1366.8	1373.6	1500.0	1186.0	0.89
ICICIGI	1939.7	1934.3	1901.5	1920.6	1953.4	1967.1	2068.7	1613.7	-4.23
IDEA	11.3	11.1	10.5	10.9	11.5	11.7	11.3	6.1	18.42
IDFCFIRSTB	80.6	80.8	79.3	80.0	81.5	82.3	82.7	52.5	-0.74
IGL	184.2	184.3	181.6	182.9	185.6	186.9	229.0	172.0	-11.87
INDHOTEL	729.0	725.7	709.8	719.4	735.3	741.6	894.9	672.6	3.58
INDIANB	782.7	783.2	770.4	776.5	789.3	796.0	894.9	473.9	-10.69
INDIGO	4819.0	4770.8	4567.3	4693.2	4896.7	4974.3	6232.5	3945.0	-13.77
INDUSINDBK	835.6	835.3	820.0	827.8	843.1	850.6	1086.6	606.0	4.53
INDUSTOWER	410.4	407.7	397.4	403.9	414.1	417.9	430.0	312.6	2.91
INFY	1598.0	1595.3	1568.4	1583.2	1610.1	1622.2	2006.5	1307.0	5.58
IOC	161.8	162.1	158.6	160.2	163.7	165.6	174.5	110.7	-4.51
IRB	41.8	41.8	41.1	41.4	42.1	42.4	61.0	40.5	-3.78
IRCTC	669.9	668.9	662.4	666.1	672.7	675.5	859.7	656.0	-4.90
IREDA	134.5	133.9	131.2	132.9	135.5	136.5	234.3	129.1	-9.57
IRFC	113.3	112.8	110.7	112.0	114.1	114.9	166.9	108.0	-6.19
ITC	402.9	402.7	399.8	401.3	404.2	405.6	491.0	390.2	-0.65
ITCHOTELS	191.4	191.5	189.0	190.2	192.7	194.0	261.6	155.1	-6.94

NSE 200 SUPPORT & RESISTANCE

SYMBOL	CLOSE	PIVOT	SUPT 2	SUPT 1	RESI 1	RESI 2	52 W H	52 W L	30 D % CHG
JINDALSTEL	1012.9	1010.3	997.6	1005.2	1017.9	1023.0	1098.0	723.4	-5.46
JIOFIN	298.5	295.8	286.8	292.6	301.6	304.8	346.3	198.7	-1.16
JSWENERGY	457.8	455.3	443.5	450.6	462.5	467.2	700.9	418.8	-12.38
JSWSTEEL	1105.4	1104.1	1088.3	1096.8	1112.6	1119.9	1223.9	880.0	-6.27
JUBLFOOD	597.9	592.8	575.0	586.4	604.3	610.7	796.8	565.0	2.32
KALYANKJIL	470.1	468.3	453.3	461.7	476.7	483.3	795.4	399.4	-7.91
KEI	4057.3	4027.3	3902.8	3980.0	4104.5	4151.8	4706.0	2424.0	0.62
KOTAKBANK	2180.2	2168.1	2082.2	2131.2	2217.1	2254.0	2301.9	1723.8	4.18
KPITTECH	1232.5	1221.2	1180.0	1206.3	1247.5	1262.4	1563.4	1020.6	3.32
LICHSGFIN	533.4	532.8	527.8	530.6	535.6	537.7	646.5	483.7	-6.70
LICI	858.4	858.6	848.1	853.2	863.7	869.1	980.0	715.3	-4.60
LODHA	1080.5	1077.7	1059.3	1069.9	1088.3	1096.1	1531.0	1035.2	-10.41
LT	4003.9	4001.2	3970.8	3987.3	4017.7	4031.6	4140.0	2965.3	2.18
LTF	301.7	302.3	296.8	299.3	304.8	307.8	315.4	129.2	0.27
LTIM	6294.5	6273.8	6176.8	6235.7	6332.7	6370.8	6768.0	3802.0	11.55
LUPIN	2081.8	2071.4	2032.1	2057.0	2096.3	2110.7	2402.9	1795.2	4.60
M&M	3665.2	3650.1	3596.9	3631.0	3684.2	3703.3	3795.0	2425.0	0.04
M&MFIN	340.3	343.3	331.4	335.9	347.8	355.2	387.0	231.0	8.55
MANKIND	2166.8	2158.0	2110.9	2138.8	2185.9	2205.1	3054.8	2115.1	-3.12
MARICO	724.7	724.7	713.5	719.1	730.3	735.9	765.3	577.9	0.76
MARUTI	16248.0	16175.7	15862.7	16055.3	16368.3	16488.7	16660.0	10725.0	4.27
MAXHEALTH	1087.9	1084.4	1067.6	1077.7	1094.5	1101.2	1314.3	940.1	-0.92
MAZDOCK	2467.5	2467.8	2421.2	2444.4	2491.0	2514.4	3775.0	1918.1	-8.80
MFSL	1703.6	1703.9	1672.9	1688.3	1719.3	1734.9	1751.4	950.0	5.22
MOTHERSON	119.8	118.7	114.9	117.3	121.2	122.6	120.2	71.5	16.82
MOTILALOFS	832.5	834.2	816.4	824.4	842.2	852.0	1097.1	513.0	-16.92
MPHASIS	2894.9	2886.4	2818.1	2856.5	2924.8	2954.7	3238.0	2044.6	4.28
MRF	153560	152603	148953	151257	154907	156253	163600	102124	-2.70
MUTHOOTFIN	3734.2	3748.2	3689.8	3712.0	3770.4	3806.6	3833.0	1965.0	12.20
NATIONALUM	264.3	265.1	259.6	262.0	267.5	270.6	276.2	137.8	2.70
NAUKRI	1343.5	1342.1	1311.2	1327.4	1358.3	1373.0	1825.8	1157.0	0.08
NESTLEIND	1215.0	1213.7	1199.1	1207.1	1221.7	1228.3	1311.6	1055.0	-3.79
NHPC	76.7	76.4	75.0	75.8	77.3	77.9	92.3	71.0	-6.83
NMDC	75.3	75.1	74.0	74.6	75.8	76.2	82.1	59.5	0.31
NTPC	322.6	321.7	317.4	320.0	324.3	326.0	371.5	292.8	-0.88
NTPCGREEN	90.9	90.5	88.9	89.9	91.5	92.2	154.4	84.6	-7.19
NYKAA	249.6	248.9	240.2	244.9	253.6	257.6	273.2	154.9	-4.32
OBEROIRLTY	1632.8	1632.0	1595.1	1613.9	1650.8	1668.9	2343.7	1452.0	-8.64
OFSS	8005.0	7855.3	7343.3	7674.2	8186.2	8367.3	13220.0	7038.0	-2.10
OIL	404.9	403.4	393.3	399.1	409.2	413.6	494.6	325.0	-6.24
ONGC	238.4	239.3	236.1	237.3	240.4	242.4	273.5	205.0	-5.17
PAGEIND	37065.0	36936.7	36341.7	36703.3	37298.3	37531.7	50590.0	36575.0	-7.80
PATANJALI	534.1	532.5	522.1	528.1	538.5	542.9	670.3	521.0	-7.92
PAYTM	1280.5	1274.5	1237.8	1259.1	1295.8	1311.2	1381.8	651.5	-3.77
PERSISTENT	6204.0	6150.8	5940.3	6072.2	6282.7	6361.3	6788.9	4149.0	5.79
PFC	342.6	342.5	338.5	340.5	344.6	346.6	520.0	334.9	-9.21
PHOENIXLTD	1743.8	1737.7	1702.8	1723.3	1758.2	1772.6	1890.9	1402.5	-0.97
PIDILITIND	1467.4	1463.6	1442.1	1454.8	1476.3	1485.1	1617.4	1311.1	0.74
PIIND	3376.0	3365.7	3306.7	3341.3	3400.3	3424.7	4330.0	2951.1	-11.63
PNB	117.6	117.3	115.4	116.5	118.4	119.2	127.8	85.5	-3.90

NSE 200 SUPPORT & RESISTANCE

SYMBOL	CLOSE	PIVOT	SUPT 2	SUPT 1	RESI 1	RESI 2	52 W H	52 W L	30 D % CHG
POLICYBZR	1948.1	1934.6	1886.4	1917.2	1965.4	1982.8	2246.9	1311.4	8.32
POLYCAB	7218.5	7215.2	7028.2	7123.3	7310.3	7402.2	7903.0	4555.0	-5.12
POWERGRID	264.8	264.6	260.7	262.8	266.6	268.4	336.3	247.3	-1.27
POWERINDIA	19230.0	19095.0	18550.0	18890.0	19435.0	19640.0	22840.0	8801.0	-9.71
PREMIERENE	904.9	885.3	802.4	853.7	936.6	968.2	1388.0	774.1	-11.59
PRESTIGE	1652.2	1643.4	1596.2	1624.2	1671.4	1690.6	1900.0	1048.1	-5.63
RECLTD	344.0	343.2	338.2	341.1	346.1	348.1	572.7	336.5	-5.08
RELIANCE	1545.0	1539.7	1513.7	1529.3	1555.3	1565.7	1581.3	1114.9	3.74
RVNL	311.9	311.7	303.0	307.4	316.2	320.5	501.8	301.2	-1.27
SAIL	129.5	129.3	127.7	128.6	130.2	130.9	145.9	99.2	-10.25
SBICARD	873.2	872.9	848.6	860.9	885.2	897.1	1027.3	663.1	-0.21
SBILIFE	2006.9	2006.7	1984.6	1995.7	2017.8	2028.8	2086.6	1372.6	0.88
SBIN	963.3	962.7	954.7	959.0	967.0	970.8	999.0	680.0	1.27
SHREECEM	26080.0	26056.7	25446.7	25763.3	26373.3	26666.7	32490.0	24817.8	-3.73
SHRIRAMFIN	847.2	844.5	829.6	838.4	853.3	859.4	872.0	493.4	3.17
SIEMENS	3196.5	3185.9	3136.2	3166.3	3216.0	3235.6	8036.0	2450.0	4.65
SOLARINDS	12458.0	12450.3	12317.3	12387.7	12520.7	12583.3	17820.0	8482.5	-7.08
SONACOMS	483.2	481.7	457.8	470.5	494.4	505.6	649.1	380.0	-0.53
SRF	2943.7	2938.9	2904.5	2924.1	2958.5	2973.3	3325.0	2196.9	1.37
SUNPHARMA	1807.2	1797.6	1762.2	1784.7	1820.1	1833.0	1910.0	1548.0	6.44
SUPREMEIND	3234.2	3235.2	3127.8	3181.0	3288.4	3342.6	5156.8	3095.0	-16.35
SUZLON	52.0	51.9	50.8	51.4	52.5	53.1	74.3	46.2	-9.39
SWIGGY	401.2	402.0	391.1	396.1	407.1	413.0	617.3	297.0	3.68
TATACOMM	1775.3	1779.7	1748.2	1761.7	1793.2	1811.2	2004.0	1291.0	-3.72
TATACONSUM	1142.1	1143.8	1124.6	1133.3	1152.5	1163.0	1202.8	882.9	-0.05
TATAELXSI	5016.5	4969.0	4806.5	4911.5	5074.0	5131.5	7449.0	4700.0	-3.66
TATAPOWER	380.2	379.5	373.5	376.8	382.9	385.6	438.6	326.4	-3.97
TATASTEEL	166.4	165.4	161.9	164.1	167.6	168.9	186.9	122.6	-8.32
TATATECH	655.8	651.7	636.3	646.0	661.4	667.1	955.0	597.0	-3.41
TCS	3191.9	3184.5	3129.2	3160.5	3215.8	3239.8	4494.9	2866.6	5.51
TECHM	1568.2	1560.4	1529.4	1548.8	1579.8	1591.4	1807.7	1209.4	12.19
TIINDIA	2651.1	2633.6	2559.3	2605.2	2679.5	2707.9	3825.0	2407.1	-11.05
TITAN	3844.8	3825.9	3747.1	3795.9	3874.7	3904.7	3956.0	2925.0	1.10
TMPV	346.7	345.4	338.6	342.6	349.4	352.2	810.0	341.4	-15.54
TORNTPHARM	3799.0	3789.3	3749.5	3774.2	3814.0	3829.1	3882.2	2886.5	-0.48
TORNTPOWER	1282.7	1279.1	1240.4	1261.5	1300.2	1317.8	1713.8	1188.0	-2.25
TRENT	4047.5	4012.7	3882.2	3964.9	4095.4	4143.2	7493.1	3930.1	-5.51
TVSMOTOR	3637.4	3623.0	3569.5	3603.4	3656.9	3676.5	3720.0	2171.4	4.20
ULTRACEMCO	11472.0	11407.3	11189.3	11330.7	11548.7	11625.3	13097.0	10047.9	-2.18
UNIONBANK	150.5	149.9	146.3	148.4	152.0	153.4	160.2	100.8	-2.41
UNITDSPR	1437.2	1435.8	1414.9	1426.1	1447.0	1456.7	1700.0	1271.1	1.97
UPL	745.9	742.3	726.4	736.1	752.0	758.2	776.0	493.0	-0.64
VBL	478.5	475.1	461.7	470.1	483.5	488.4	663.6	419.6	3.29
VEDL	529.1	529.6	520.2	524.6	534.0	539.0	543.0	363.0	1.82
VMM	131.7	130.8	126.7	129.2	133.4	135.0	157.6	96.0	-6.07
VOLTAS	1353.4	1345.7	1317.4	1335.4	1363.7	1374.0	1859.4	1135.0	0.95
WAAREENER	2895.4	2889.8	2825.9	2860.7	2924.6	2953.7	3865.0	1863.0	-12.66
WIPRO	259.3	259.0	256.7	258.0	260.2	261.2	324.6	228.0	8.09
YESBANK	21.9	21.8	21.4	21.7	22.1	22.2	24.3	16.0	-3.52
ZYDUSLIFE	922.6	923.2	915.8	919.2	926.6	930.6	1059.1	795.0	-2.73

Disclosure & Disclaimer :

HDFC Securities Limited (HSL) is a SEBI Registered Research Analyst having registration no. INH000002475.

This report has been prepared by HDFC Securities Ltd and is solely for information of the recipient only. The report must not be used as a singular basis of any investment decision. The views herein are of a general nature and do not consider the risk appetite or the particular circumstances of an individual investor; readers are requested to take professional advice before investing. "This report may have been refined using AI tools to enhance clarity and readability."

Nothing in this document should be construed as investment advice. Each recipient of this document should make such investigations as they deem necessary to arrive at an independent evaluation of an investment in securities of the companies referred to in this document (including merits and risks) and should consult their own advisors to determine merits and risks of such investment. The information and opinions contained herein have been compiled or arrived at, based upon information obtained in good faith from sources believed to be reliable. Such information has not been independently verified and no guaranty, representation of warranty, express or implied, is made as to its accuracy, completeness or correctness. All such information and opinions are subject to change without notice. Descriptions of any company or companies or their securities mentioned herein are not intended to be complete. HSL is not obliged to update this report for such changes. HSL has the right to make changes and modifications at any time.

This report is not directed to, or intended for display, downloading, printing, reproducing or for distribution to or use by, any person or entity who is a citizen or resident or located in any locality, state, country or other jurisdiction where such distribution, publication, reproduction, availability or use would be contrary to law or regulation or what would subject HSL or its affiliates to any registration or licensing requirement within such jurisdiction.

If this report is inadvertently sent or has reached any person in such country, especially, United States of America, the same should be ignored and brought to the attention of the sender. This document may not be reproduced, distributed or published in whole or in part, directly or indirectly, for any purposes or in any manner.

Foreign currencies denominated securities, wherever mentioned, are subject to exchange rate fluctuations, which could have an adverse effect on their value or price, or the income derived from them. In addition, investors in securities such as ADRs, the values of which are influenced by foreign currencies effectively assume currency risk. It should not be considered to be taken as an offer to

sell or a solicitation to buy any security.

This document is not, and should not, be construed as an offer or solicitation of an offer, to buy or sell any securities or other financial instruments. This report should not be construed as an invitation or solicitation to do business with HSL. HSL may from time to time solicit from, or perform broking, or other services for, any company mentioned in this mail and/or its attachments.

HSL and its affiliated company(ies), their directors and employees may; (a) from time to time, have a long or short position in, and buy or sell the securities of the company(ies) mentioned herein or (b) be engaged in any other transaction involving such securities and earn brokerage or other compensation or act as a market maker in the financial instruments of the company(ies) discussed herein or act as an advisor or lender/borrower to such company(ies) or may have any other potential conflict of interests with respect to any recommendation and other related information and opinions.

HSL, its directors, analysts or employees do not take any responsibility, financial or otherwise, of the losses or the damages sustained due to the investments made or any action taken on basis of this report, including but not restricted to, fluctuation in the prices of shares and bonds, changes in the currency rates, diminution in the NAVs, reduction in the dividend or income, etc.

HSL and other group companies, its directors, associates, employees may have various positions in any of the stocks, securities and financial instruments dealt in the report, or may make sell or purchase or other deals in these securities from time to time or may deal in other securities of the companies / organizations described in this report. As regards the associates of HSL please refer the website.

HSL or its associates might have managed or co-managed public offering of securities for the subject company or might have been mandated by the subject company for any other assignment in the past twelve months.

Please note that HDFC Securities has a proprietary trading desk. This desk maintains an arm's length distance with the Research team and all its activities are segregated from Research activities. The proprietary desk operates independently, potentially leading to investment decisions that may deviate from research views.

HSL or its associates might have received any compensation from the companies mentioned in the report during the period preceding twelve months from the date of this report for services in respect of managing or co-managing public offerings, corporate finance, investment banking or merchant banking, brokerage services or other advisory service in a merger or specific transaction in the normal course of business.

HSL or its analysts did not receive any compensation or other benefits from the companies mentioned in the report or third party in connection with preparation of the research report. Accordingly, neither HSL nor Research Analysts have any material conflict of interest at the time of publication of this report. Compensation of our Research Analysts is not based on any specific merchant banking, investment banking or brokerage service transactions. HSL may have issued other reports that are inconsistent with and reach different conclusion from the information presented in this report.

Research entity has not been engaged in market making activity for the subject company. Research analyst has not served as an officer, director or employee of the subject company. We have not received any compensation/benefits from the subject company or third party in connection with the Research Report.

HDFC securities Limited, I Think Techno Campus, Building - B, "Alpha", Office Floor 8, Near Kanjurmarg Station, Opp. Crompton Greaves, Kanjurmarg (East), Mumbai 400 042 Phone: (022) 3075 3400 Fax: (022) 2496 5066

Compliance Officer: Murli V Karkera Email: complianceofficer@hdfcsec.com Phone: (022) 3045 3600

For grievance redressal contact Customer Care Team Email: customercare@hdfcsec.com Phone: (022) 3901 9400

HDFC Securities Limited, SEBI Reg. No.: NSE, BSE, MSEI, MCX: INZ000186937; AMFI Reg. No. ARN: 13549; PFRDA Reg. No. POP: 11092018; IRDA Corporate Agent License No.: CA0062; SEBI Research Analyst Reg. No.: INH000002475; SEBI Investment Adviser Reg. No.: INA000011538; CIN - U67120MH2000PLC152193

Investment in securities market are subject to market risks. Read all the related documents carefully before investing.

Mutual Funds Investments are subject to market risk. Please read the offer and scheme related documents carefully before investing.

Registration granted by SEBI, membership of BASL (in case of IAs) and certification from NISM in no way guarantee performance of the intermediary or provide any assurance of returns to investors.